

◆ 圆锥破碎机系列 Cone Crusher

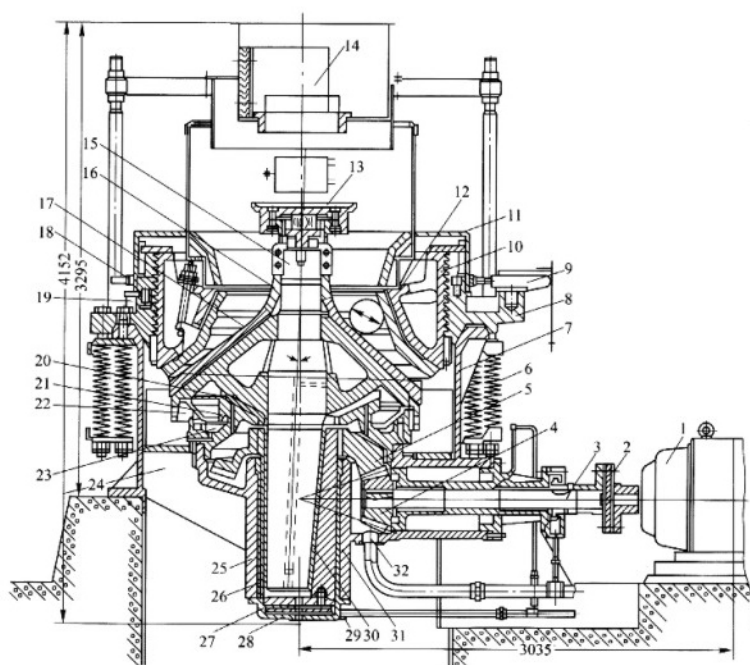
本系列破碎机，适用于破碎中等以上硬度的各种矿石和岩石。具有结构可靠，生产效率高，调整方便，使用经济等特点。其弹簧保险系统是过载保护装置，可使异物铁块通过破碎腔而不危害机器，采用干油或水两种密封形式，使石粉与润滑油隔离，保证可靠工作。破碎腔型式由矿石用途决定，标准型适用于中碎；中型和短头型适用于细碎。



The crusher of this series is suitable for crushing various of mid-hard and above mid-hard ores and rocks. This crusher has the advantage of reliable construction, high productivity, easy adjustment and less cost in operation. The spring release system of crusher acts an overload protection system that allows tramp to pass through the crushing chamber without damage to the crusher, use dry oil, water, two kinds of sealed formation. It made plaster stone and engine oil separated, assured reliable performance. The type of crushing chamber depend upon the size of feed and fineness of the crushed product. The standard type is applied to medium crushing, the medium type is applied to medium or fine crushing and the short head is applied to fine crushing.

砂石生产线设备

Sand and Stone Production Line



- | | |
|-----------|------------------------|
| 1. 电动机 | Motor |
| 2. 联轴节 | Shaft coupling |
| 3. 传动轴 | Countershaft |
| 4. 小圆锥齿轮 | Pinion |
| 5. 大圆锥齿轮 | Gear |
| 6. 保险弹簧 | Safety spring |
| 7. 机架 | Frame |
| 8. 支承环 | Backup ring |
| 9. 推动油缸 | Driving Cylinder |
| 10. 调整环 | Adjustment ring |
| 11. 防尘罩 | Dust seal |
| 12. 固定锥衬板 | Concaves |
| 13. 给矿盘 | Cone feed plate |
| 14. 给矿箱 | Feeding Box |
| 15. 主轴 | Main shaft |
| 16. 可动锥衬板 | Mantle |
| 17. 可动锥体 | Head ball |
| 18. 锁紧螺帽 | Locking nut |
| 19. 活塞 | Piston |
| 20. 球面轴瓦 | Socket liner |
| 21. 球面轴承座 | Spherical bearing seat |
| 22. 球形颈圈 | Slide Ring |
| 23. 环形槽 | Ring slot |
| 24. 筋板 | Slab |
| 25. 中心套筒 | Main Shaft Sleeve |
| 26. 衬套 | Bushing |
| 27. 止推圆盘 | Thrust disk |
| 28. 机架下盖 | Lower cover of frame |
| 29. 进油孔 | Fuel feed hole |
| 30. 锥形衬套 | Cone bushing |
| 31. 偏心轴承 | Eccentric bearing |
| 32. 排油孔 | Drain port |

规格与性能参数表 Specifications:

型号 Model	破碎锥 直径 Diameter Breaking (mm)	进料口 尺寸 Feed Opening (mm)	最大进 料粒度 Max. Feed Size (mm)	出料口调 节范围 Range of Discharge Opening (mm)	产量 Capacity (t/h)	功率 Power (KW)	偏心轴 转速 Speed of Eccentric Shaft (r/min)	重量 (含电机) Weight Including Motor (t)	外形尺寸 (长×宽×高) Dimension (Length, Width, Height) (mm)
PYB600	φ 600	75	65	12-15	40	30	356	5	2234×1370×1675
PYD600	φ 600	40	35	3-13	12-23	30	356	5.1	2234×1370×1675
PYB900	φ 900	135	115	15-50	50-90	55	333	11.2	2692×1640×2350
PYZ900	φ 900	70	60	5-20	20-65	55	333	11.2	2692×1640×2350
PYD900	φ 900	50	50	3-13	15-50	55	333	11.3	2692×1640×2350
PYB1200	φ 1200	170	145	20-50	110-168	110	300	24.7	2790×1878×2844
PYZ1200	φ 1200	115	100	8-25	42-135	110	300	25	2790×1878×2844
PYD1200	φ 1200	60	50	3-15	18-105	110	300	25.3	2790×1878×2844
PYB1750	φ 1750	250	215	25-50	280-480	160	245	50.3	3910×2894×3809
PYZ1750	φ 1750	215	185	10-30	115-320	160	245	50.3	3910×2894×3809
PYD1750	φ 1750	100	85	5-13	75-230	160	245	50.2	3910×2894×3809
PYB2200	φ 2200	350	300	30-60	59-1000	280/260	220	80	4622×3302×4470
PYZ2200	φ 2200	275	230	10-30	200-580	280/260	220	80	4622×3302×4470
PYD2200	φ 2200	130	100	5-15	120-340	280/260	220	81.4	4622×3302×4470

注: 各项参数及外形若有变更, 依发货时随机附带的使用维护说明书为准。

Notes: If there is any modification, all parameter and overall dimension are subject to the operating Instructions.